

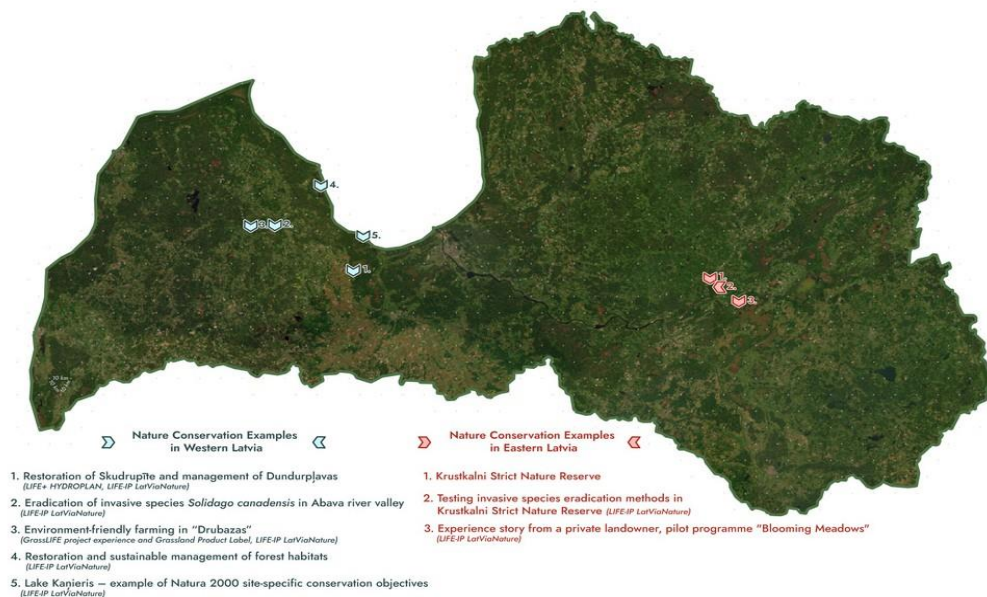
3. Excursion: Nature Conservation examples in Eastern Latvia September 18, 2024

An exclusive guided tour through the [Krustkalni Nature Reserve](#) in Eastern Latvia, accessible only in the presence of a Nature Conservation Agency expert. This reserve was established to preserve the unique biodiversity of its aquatic and forest ecosystems, coniferous forests on ridge-like terrain forms, habitats associated with freshwater lime formations, as well as the area's landscape and cultural-historical values.

As part of the LIFE-IP LatViaNature project, Krustkalni Nature Reserve is actively involved in combating invasive species such as the box elder (*Acer negundo* L.), which is being managed through methods like mowing and mulching. The tour includes educational narratives from LIFE-IP LatViaNature invasive species experts, and a meadow expert, as the area includes habitats of protected species like the Siberian Iris (*Iris sibirica* L.) alongside valuable grasslands and forests.

This excursion will provide a comprehensive view of practical conservation efforts and educational insights, offering participants a deep dive into the intricate balance of maintaining and enhancing biodiversity in protected areas

At the end of the excursion you will have an opportunity to visit a farm "Priēžukalns" whose owner is a participant of the LIFE-IP LatViaNature pilot programme "Flower Meadows" and has received the Natural Meadow product label established in the LatViaNature project for honey production.



Practical aspects:

- Take drinking water with you (some refill will be possible on the bus)
- Choose clothes according to the weather, regular hiking shoes are recommended
- On the way there and back, there will be stops at gas stations with access to wc facilities (free of charge) and snacks/coffee for an additional fee
- In farm "Priežukalns" likely it will be possible to buy honey products (payment in cash)
- A light sandwich for lunch and warm soup for dinner will be provided

Link to additional handouts related to the excursion (a limited number will be available in printed form on the buss)

<https://latvianature.daba.gov.lv/en/nordic-baltic-life-platform-meeting/>

Agenda of the day:

7.30	Departure from <i>"Hotel Radisson Blu Daugava"</i>
7.30- 10.20	Travel to the Krustkalni Strict Nature Reserve site
10.20- 12.15	Field trip at Krustkalni Strict Nature Reserve (includes a few km hike, level: easy)
12.15- 13.00	Light sandwich and free time
13.00- 13.15	Travel to invasive alien species eradication site
13.15- 14.30	Field trip at invasive alien species eradication site (<i>Acer negundo</i> , <i>Impatiens glandulifera</i>)
14.30- 15.00	Travel to the "Blooming Meadows" private landowner site
15.00- 16.30	Experience stories from the LIFE-IP LatViaNature pilot programme for private landowners "Blooming Meadows" and Grassland Product Label – Honey. Light dinner (soup).
16.30- 19.00	Travel back to Riga, <i>"Hotel Radisson Blu Daugava"</i>