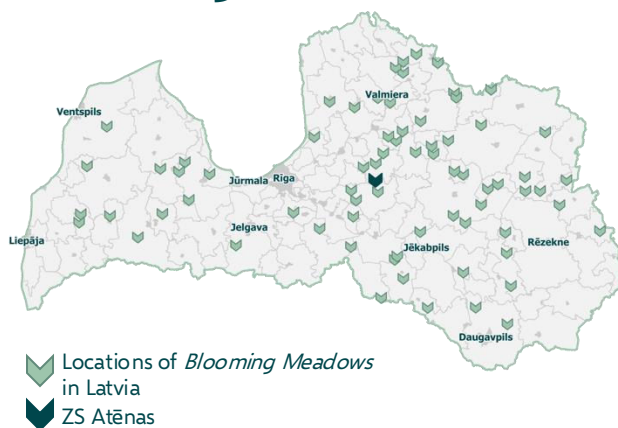


Farm Atēnas: participant in the result-based grassland conservation scheme Blooming Meadows

The *Blooming Meadows* pilot programme:

- helps farmers to increase biodiversity in perennial grasslands (meadows and pastures) aiming to reach the status of grassland habitats of EU importance;
- implemented within LIFE-IP LatViaNature project and coordinated by the Nature Conservation Agency of Latvia;
- designed in a diverse partnership between nature conservation and agriculture experts, universities, non-governmental organizations;
- includes 65 farms from across Latvia with a total area of 675 hectares;
- participants assess grassland conservation success annually;
- tests the results-based and hybrid approach;
- provides financial support (87-203 euro per hectare a year) according to results – the higher the biodiversity achieved, the larger the financial support.
- Discover more:
<https://latvianature.daba.gov.lv/ziedu-plavas/>

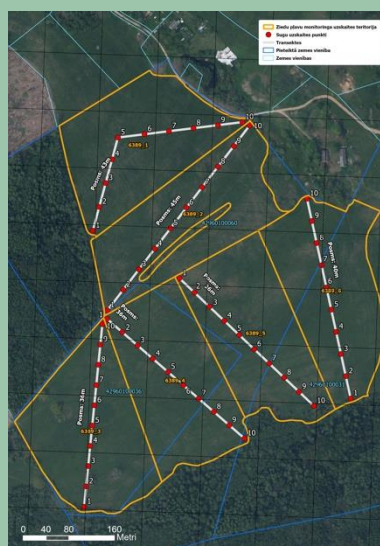


Farm Atēnas



Farmer: Aelita Runce
Address: Zaube, Cēsis district
Farm profile: Beef cattle
Blooming Meadows area: 30 ha

Grassland challenges: distribution of expansive species, e.g. *Dactylis glomerata*, *Phleum pratense*, *Taraxacum officinale*, lack of species richness

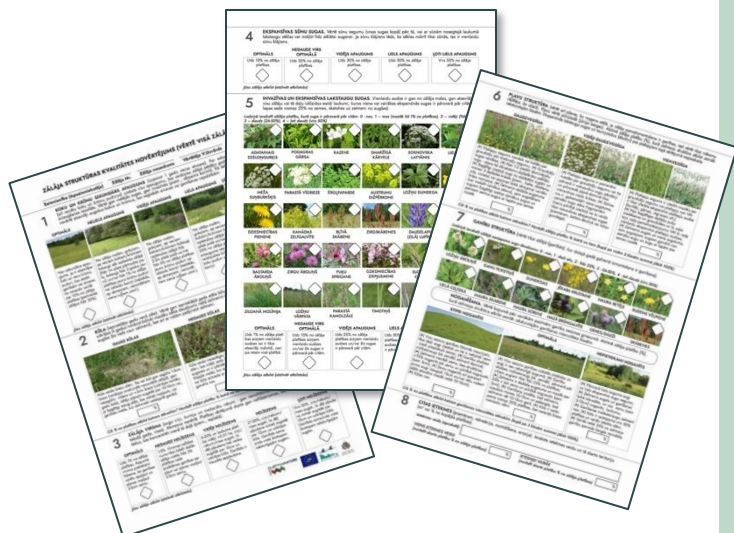


Basic level monitoring of grassland management and restoration success

Basic level monitoring was designed and carried out together with the University of Latvia. Structures and species are monitored by both - the farmer and expert. Monitoring fields are maximum of 5 ha large and chosen due to ecological features. Each field has a transect with 10 points, with the area $R=2m$, to count plants. Structures are monitored within the whole monitoring field.

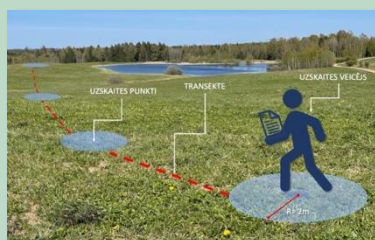
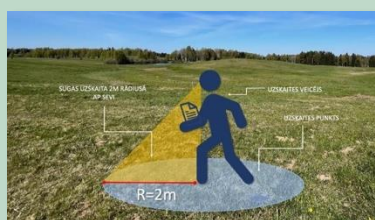
STRUCTURES

1. Coverage of trees and shrubs;
2. Litter (no, absence of, low, normal, high);
3. Grassland surface (e.g. dug-up ground by moles or wild boars)
4. Expansive moss species;
5. Aggressive native species & invasive species;
6. Overall meadow structure (stands, colours, etc);
7. Overall pasture structure (% of overgrazed area, normal grazing intensity, not enough grazed);
8. Other effects (e.g., erosion, wild animal feeding places)



SPECIES

- Species count in all 10 transect points
- List of 50 taxa (16 genus, 34 species)
- Grouped by colour of flowers: white, green, yellow, pink and purple/blue
- Species covering whole range of moisture conditions
- Species catalog: <https://latvianature.daba.gov.lv/wp-content/uploads/2024/02/sugu-katalogs-WEB-LIFE-XS.pdf>



AUGU SUGU DAUDZĪVEIBAS NOVĒRTĒJUMS ZĒLĀJĀ TRANSEKTES 10 PUNKTOS

Saimniecība (Apdzīvotāji)		Zālāja Nr.	Zālāja nosaukums	Vērtējuma Vērtējums									
				TRANSEKTES PUNKTS									
ZIEDU KRĀSA	SUGAS NOSAUKUMS			1	2	3	4	5	6	7	8	9	10
BALTA ZIEDS	Abalīši, kalmi												
	Baltā, baltā, baltā												
	Madara, piemele												
	Nārtiņi, kalmi												
	Pļāns, pļāns												
ZĒLA ZIEDS	Sparģeļi, zārnāns, mašā												
	Droņģi, vārdi												
	Orķi, vārdi												
	Mārdi, mašā												
	Rasārdiņi, pļāns												
DZELTENA ZIEDS	Vārdi, pļāns												
	Ardi, baltā, baltā												
	Ardi, baltā, baltā												
	Madara, tāš												
	Mārdi												
	Pļāns, pļāns, pļāns												
	Pļāns, pļāns												
	Rādi, vārdi												
	Saurbāli												
	Saurbāli, pļāns												
SĀRTI ZIEDS	Droņģi, vārdi												
	Droņģi, vārdi												
	Vārdi, vārdi, vārdi												
	Vārdi, vārdi												
	Vārdi, vārdi												
	Vārdi, vārdi												
	Vārdi, vārdi												
	Vārdi, vārdi												
	Vārdi, vārdi												
	Vārdi, vārdi												
VIOLETA ZIEDS	Mārdi												
	Pļāns, pļāns												
	Pļāns, pļāns												
	Vārdi, vārdi												
	Vārdi, vārdi												