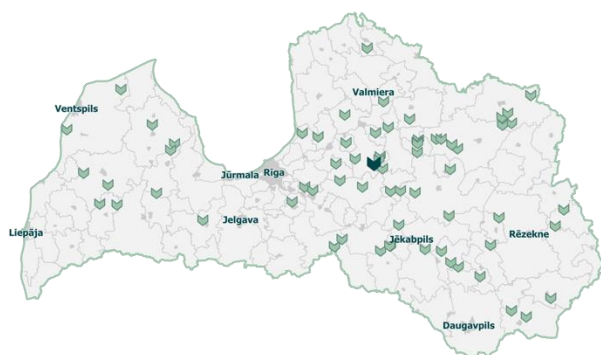


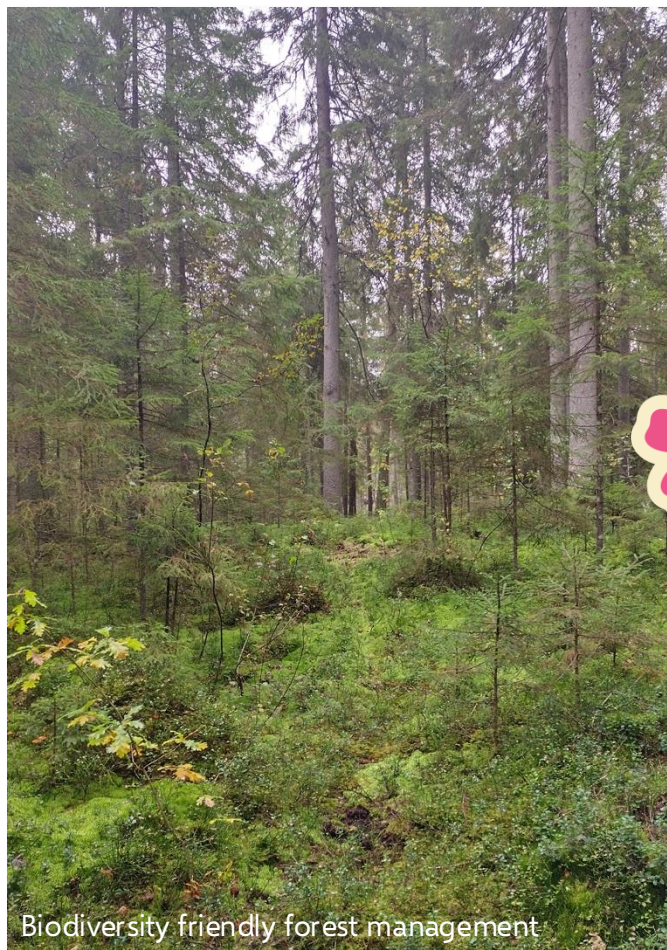


Farm Ozoliņi: participant of forest biodiversity conservation programme Living Forest and holder of Grassland Product label



 Locations of Living Forest in Latvia
 ZS Ozoliņi



Biodiversity friendly forest management

Farm Ozoliņi



Farmers: Evita and Mārtiņš Lūkins
Address: Zaube parish, Cēsis district
Farm profile: biodiversity friendly forest and grassland management, organic herbal teas, mandala workshops
Living Forest area: 15 ha
Webpage: <https://www.ozolini.lv/>

Ozoliņi is where the rich beauty of nature is cared for and allowed to flourish. Evita and Mārtiņš Lūkins care for the forests and grasslands, craft herbal teas and invite everyone to the farm to reconnect with the source of strength – nature. Over the past 25 years, continuous cover forestry has been practiced on the farm.



**DABISKO
PĻAVU
PRODUKTS**

Ozoliņi is a holder of the Grassland Product label. It is the first label in Latvia to mark products with a direct impact on nature conservation. The label is awarded to producers who manage semi-natural grasslands and produce products such as honey, herbal teas, meat and dairy products, rural tourism objects and craftsmen. By choosing products with this label, consumers support the preservation and restoration of natural values, the producers who manage semi-natural grasslands.

Living Forest – a pilot-programme for biodiversity conservation in private forests

- Living Forest – a **pilot-programme for biodiversity conservation** in private forests outside Natura 2000. The programme includes 70 forest farms from all over Latvia with a total area of 365 hectares.
- The programme consists of **three sub-programmes**: *Habitat Conservation*, which aims at maintenance of the most biologically valuable forest stands, *Habitat Creation* – a sub-programme for purposeful increase of biodiversity in the forest, as well as *Nature-friendly Forestry*, which aims at balancing the interests of forestry and the conservation of nature assets.
- Living Forest on contract-based approach provides **consultative and financial support** to those owners of private forests who commit to follow a higher standard of nature diversity conservation than currently set out by legal framework.
- Landowners are involved in **forest biodiversity monitoring**
- More about Living Forest:
<https://latvianature.daba.gov.lv/dzivaivs-mezs/>

SUB-PROGRAMMES OF LIVING FOREST

Habitat Conservation (A1)



- Do not interfere
- Preserve the buffer zone
- No harvesting for economic purposes

Habitat Creation (A2)

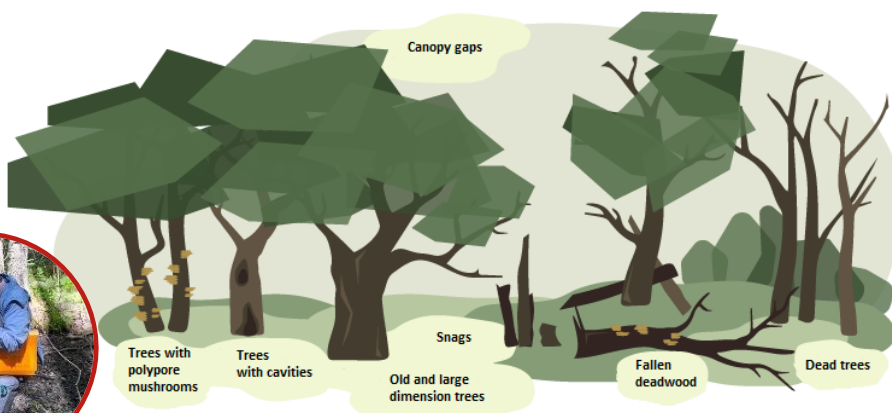


- Create the multi-aged forest stand structure
- Preserve and create deadwood
- No harvesting for economic purposes

Nature - friendly Forestry (B)



- Preserve the old trees, create deadwood
- Selective logging to mimic natural disturbances
- Harvesting for economic purposes allowed

[illegible]

Monitoring elements of forest structure

